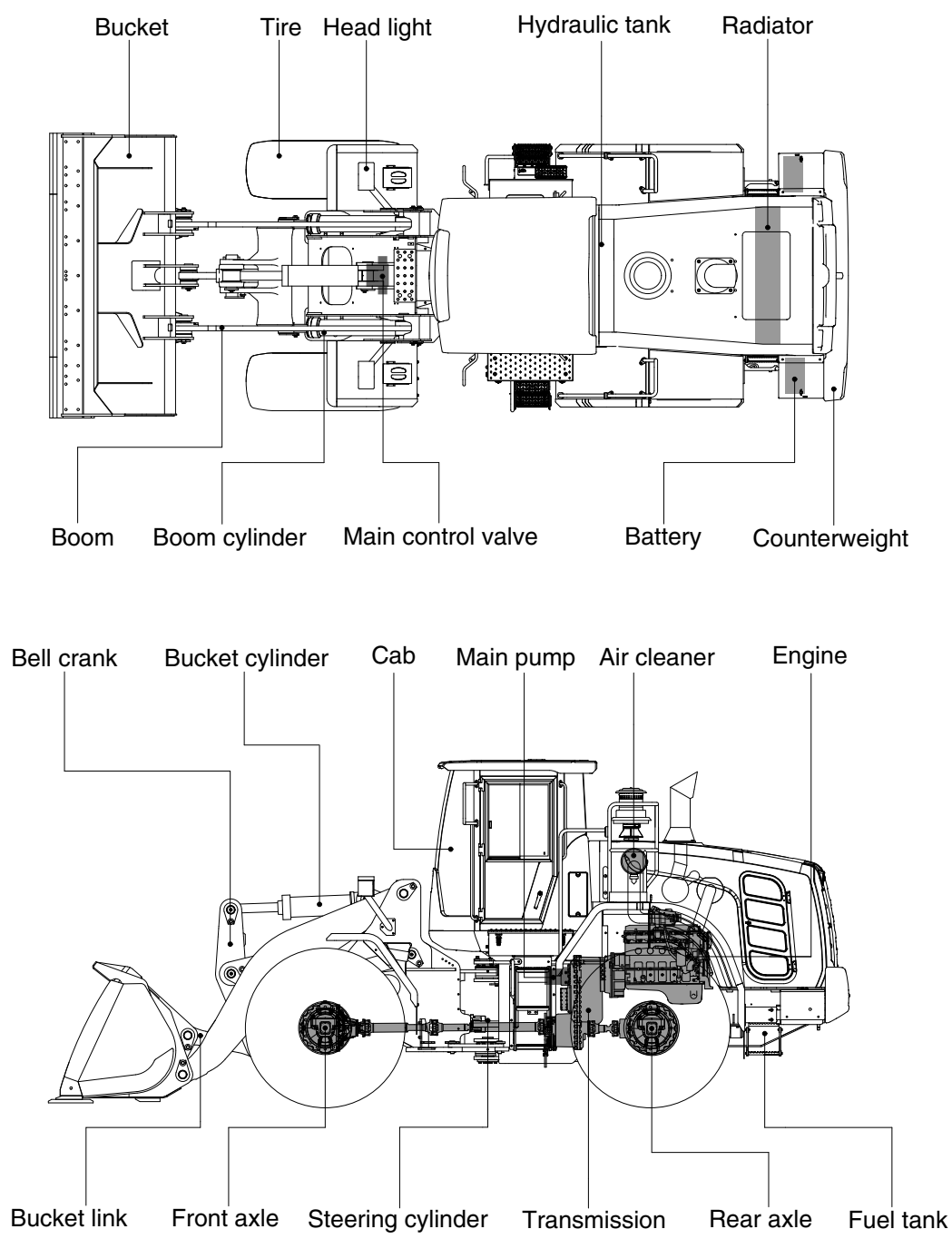


2. SPECIFICATIONS

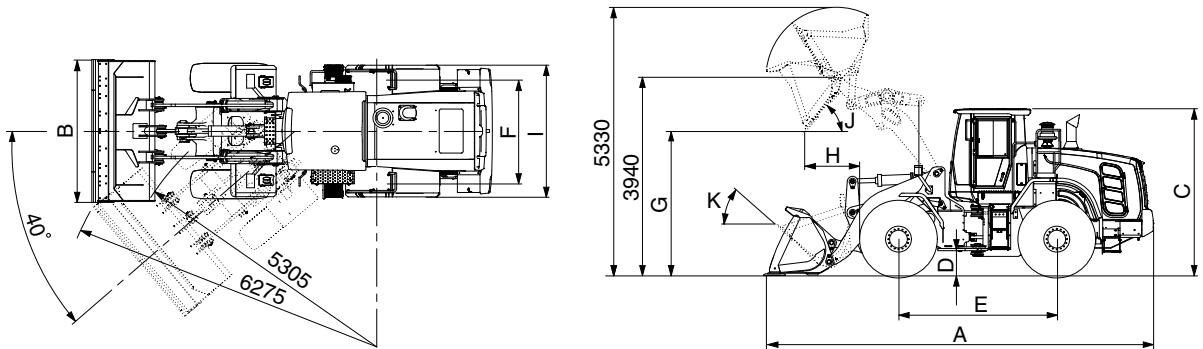
1. MAJOR COMPONENTS



955SA2SE01

2. SPECIFICATIONS

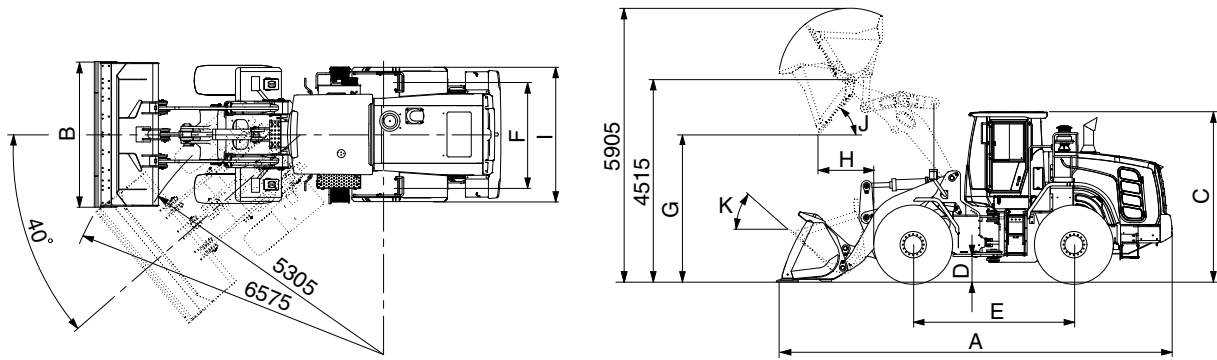
1) WITH BOLT-ON CUTTING EDGE TYPE BUCKET (HL955 T3)



757F2SE03

Description			Unit	Specification
Operating weight			kg (lb)	15650 (34505)
Bucket capacity	Struck		m³ (yd³)	2.4 (3.1)
	Heaped			2.8 (3.7)
Overall length	A		mm (ft-in)	7715 (25' 4")
Overall width	B			2740 (9' 0")
Overall height	C			3390 (11' 1")
Ground clearance	D			410 (1' 4")
Wheelbase	E			3050 (10' 0")
Tread	F			2010(6' 7")
Dump clearance at 45°	G			2785 (9' 2")
Dump reach (full lift)	H			1180 (3' 10")
Width over tires	I			2530 (8' 4")
Dump angle	J			degree (°)
Rollback angle (carry position)	K		46	
Cycle time	Lift (with load)		sec	5.5
	Dump (with load)			1.8
	Lower (empty)			3.7
Maximum travel speed			km/hr (mph)	37.3 (23.2)
Braking distance			m (ft-in)	11.8 (38' 9")
Minimum turning radius (center of outside tire)				5.3 (17' 5")
Gradeability			degree (°)	30
Breakout force			kg (lb)	14370 (31680)
Travel speed	Forward	First gear	km/hr (mph)	6.8 (4.2)
		Second gear		11.2 (7.0)
		Third gear		22.6 (14.0)
		Fourth gear		37.3 (23.2)
	Reverse	First gear		7.1 (4.4)
		Second gear		11.8 (7.3)
		Third gear		23.8 (14.8)

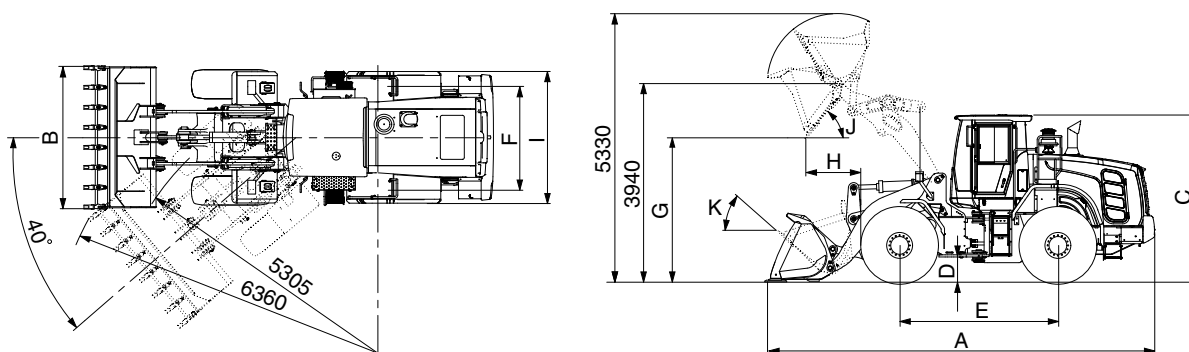
WITH BOLT-ON CUTTING EDGE TYPE BUCKET (HL955XT T3)



757F2SE03-1

Description			Unit	Specification
Operating weight			kg (lb)	16340 (36025)
Bucket capacity	Struck		m³ (yd³)	2.4 (3.1)
	Heaped			2.8 (3.7)
Overall length	A		mm (ft-in)	8310 (27' 3")
Overall width	B			2740 (9' 0")
Overall height	C			3390 (11' 1")
Ground clearance	D			410 (1' 4")
Wheelbase	E			3050 (10' 0")
Tread	F			2010 (6' 7")
Dump clearance at 45°	G			3360 (11' 0")
Dump reach (full lift)	H			1220 (4' 0")
Width over tires	I			2530 (8' 4")
Dump angle	J			degree (°)
Rollback angle (carry position)	K		47	
Cycle time	Lift (with load)		sec	5.5
	Dump (with load)			1.6
	Lower (empty)			3.7
Maximum travel speed			km/hr (mph)	37.3 (23.2)
Braking distance			m (ft-in)	11.8 (38' 9")
Minimum turning radius (center of outside tire)				5.3 (17' 5")
Gradeability			degree (°)	30
Breakout force			kg (lb)	14540 (32055)
Travel speed	Forward	First gear	km/hr (mph)	6.8 (4.2)
		Second gear		11.2 (7.0)
		Third gear		22.6 (14.0)
		Fourth gear		37.3 (23.2)
	Reverse	First gear		7.1 (4.4)
		Second gear		11.8 (7.3)
		Third gear		23.8 (14.8)

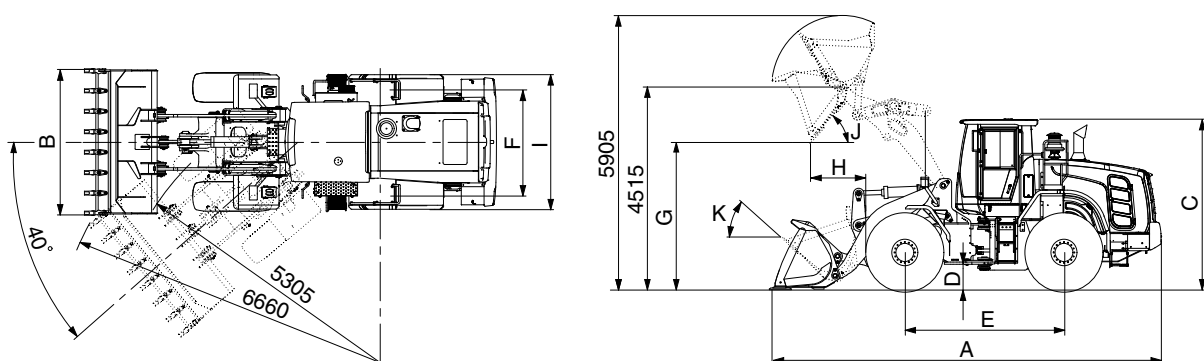
2) WITH 2-TOOTH TYPE BUCKET (HL955 T3)



757F2SE02

Description			Unit	Specification
Operating weight			kg (lb)	15705 (34950)
Bucket capacity	Struck		m³ (yd³)	2.4 (3.1)
	Heaped			2.8 (3.7)
Overall length	A		mm (ft-in)	7870 (25' 10")
Overall width	B			2810 (9' 3")
Overall height	C			3390 (11' 1")
Ground clearance	D			410 (1' 4")
Wheelbase	E			3050 (10' 0")
Tread	F			2010 (6' 7")
Dump clearance at 45°	G			2660 (8' 9")
Dump reach (full lift)	H			1275 (4' 2")
Width over tires	I			2530 (8' 4")
Dump angle	J			degree (°)
Rollback angle (carry position)	K		46	
Cycle time	Lift (with load)		sec	5.5
	Dump (with load)			1.8
	Lower (empty)			3.7
Maximum travel speed			km/hr (mph)	37.3 (23.2)
Braking distance			m (ft-in)	11.8 (38' 9")
Minimum turning radius (center of outside tire)				5.3 (17' 5")
Gradeability			degree (°)	30
Breakout force			kg (lb)	14370 (31680)
Travel speed	Forward	First gear	km/hr (mph)	6.8 (4.2)
		Second gear		11.2 (7.0)
		Third gear		22.6 (14.0)
		Fourth gear		37.3 (23.2)
	Reverse	First gear		7.1 (4.4)
		Second gear		11.8 (7.3)
		Third gear		23.8 (14.8)

WITH 2-TOOTH TYPE BUCKET (HL955XT T3)



757F2SE02-2

Description			Unit	Specification
Operating weight			kg (lb)	16395 (36145)
Bucket capacity	Struck		m³ (yd³)	2.4 (3.1)
	Heaped			2.8 (3.7)
Overall length	A		mm (ft-in)	8465 (18662)
Overall width	B			2810 (9' 3")
Overall height	C			3390 (11' 1")
Ground clearance	D			410 (1' 4")
Wheelbase	E			3050 (10' 0")
Tread	F			2010 (6' 7")
Dump clearance at 45°	G			3235 (10' 7")
Dump reach (full lift)	H			1315 (4' 4")
Width over tires	I			2530 (8' 4")
Dump angle	J			degree (°)
Rollback angle (carry position)	K		47	
Cycle time	Lift (with load)		sec	5.5
	Dump (with load)			1.6
	Lower (empty)			3.7
Maximum travel speed			km/hr (mph)	37.3 (23.2)
Braking distance			m (ft-in)	11.8 (38' 9")
Minimum turning radius (center of outside tire)				5.3 (17' 5")
Gradeability			degree (°)	30
Breakout force			kg (lb)	14540 (32055)
Travel speed	Forward	First gear	km/hr (mph)	6.8 (4.2)
		Second gear		11.2 (7.0)
		Third gear		22.6 (14.0)
		Fourth gear		37.3 (23.2)
	Reverse	First gear		7.1 (4.4)
		Second gear		11.8 (7.3)
		Third gear		23.8 (14.8)

3. WEIGHT

Item		kg	lb
Front frame assembly		1150	2540
Rear frame assembly		1681	3710
Front fender (LH/RH)		29/29	65/65
Rear fender (LH/RH)		48/47	105/105
Counterweight	HL955 T3	500	1105
	HL955XT T3	800	1765
Cab assembly		837	1850
Engine assembly		552	1220
Transmission assembly		450	995
Driveshaft (front)		34	75
Driveshaft (center)		23	55
Driveshaft (rear)		12	30
Front axle (include differential)		1,020	2,250
Rear axle (include differential)		1,020	2,250
Tire (20.5 R25, ★★, L3), 1EA		350	775
Hydraulic tank assembly		183	405
Fuel tank assembly		287	635
Main pump assembly		53	120
Fan & brake pump assembly		14	35
Main control valve (2-spool/3-spool)		90/106	200/235
Steering valve (Priority valve)		5	15
Boom assembly	HL955 T3	976	2155
	HL955XT T3	1327	2930
Bell crank assembly		293	650
Bucket link		47	105
Quick coupler assembly (ISO type)		390	860
2.8 m³ bucket, with bolt on cutting edge		1250	2760
2.8 m³ bucket, with 2-tooth		1305	2880
Boom cylinder assembly (LH/RH)		111/111	245/245
Bucket cylinder assembly (HL955 T3/HL955XT T3)		123/152	275/335
Steering cylinder assembly (LH/RH)		26/26	60/60
Seat (Including suspension and arm rest)		66	150
Battery (1EA)		40	90
Under guard kit		61	140
Engine hood assembly		302	670
Mud guard assembly (LH/RH)		23/23	100/100

4. SPECIFICATION FOR MAJOR COMPONENTS

1) ENGINE

Item	Specification
Model	HYUNDAI HE6.7
Type	4-cycle turbocharged, charge air cooled diesel engine
Control type	Electronic control
Cooling method	Water cooled
Number of cylinders and arrangement	6 cylinders, in-line
Firing order	1-5-3-6-2-4
Combustion chamber type	Direct injection type
Cylinder bore × stroke	107 × 124 mm (4.2" × 4.9")
Piston displacement	6700 cc (409 cu in)
Compression ratio	17.2 : 1
Gross power	173 hp (129 kW) at 2100 rpm
Net power	170 hp (127 kW) at 2100 rpm
Maximum power	173 hp (129 kW) at 2100 rpm
Peak gross torque	82.9 kgf · m (600 lbf · ft) at 1400 rpm
Engine oil quantity	18 ℓ (4.8 U.S. gal)
Wet weight	552 kg (1217 lb)
Starting motor	24 V - 4.8 kW
Alternator	24 V - 70 Amp
Battery	2 × 12 V × 150 Ah

2) MAIN PUMP

Item	Specification
Type	Variable piston pump
Capacity	100 cc/rev
Maximum operating pressure	280 kgf/cm ² (3980 psi)
Rated oil quantity (at 2200 rpm)	211 ℓ /min (55.7 U.S.gpm / 48.4 U.K.gpm)
Maximum speed	2230 rpm

3) FAN AND BRAKE PUMP

Item	Specification
Type	Variable piston pump
Capacity	28 cc/rev
Maximum operating pressure	250 kgf/cm ² (3560 psi)
Rated oil quantity (at 2200 rpm)	62 ℓ /min (16.3 U.S.gpm)
Maximum speed	2230 rpm

4) MAIN CONTROL VALVE

Item	Specification
Type	2 spool & 3spool
Operating method	Hydraulic pilot assist
System pressure	280 kgf/cm ² (3980 psi)
Overload relief valve pressure	340 kgf/cm ² (4840 psi)

5) REMOTE CONTROL VALVE (EH TYPE)

Item	Specification
Type	Fingertip
Axle	Single axle for boom, bucket, auxiliary
Operating voltage	4.5~5.5 V
Output signal	0.5~4.5 V (neutral 2.5 V)

6) CYLINDER

Item		Specification
Boom cylinder	Bore dia × Rod dia × Stroke	Ø 125 × Ø 70 × 745 mm
Bucket cylinder (HL955 T3)	Bore dia × Rod dia × Stroke	Ø 140 × Ø 75 × 560 mm
Bucket cylinder (HL955XT T3)	Bore dia × Rod dia × Stroke	Ø 140 × Ø 75 × 585 mm
Steering cylinder	Bore dia × Rod dia × Stroke	Ø 70 × Ø 45 × 418 mm

7) DYNAMIC POWER TRANSMISSION DEVICES

Item			Specification
Transmission	Model		ZF 4WG 190
	Type	Converter	Single-stage, single-phase
		Transmission	Full-automatic power shift
	Gear shift		Forward fourth gear, reverse third gear
	Control		Electrical single lever type, kick-down system
	Travel speed		See the page 2-2.
Axle	Drive devices		4-wheel drive
	Front		Front fixed location
	Rear		Oscillation $\pm 12^\circ$ of center pin-loaded
Wheels	Tires		20.5 R25, ★★, L3
Brakes	Travel		Four-wheel, wet-disc type, full hydraulic
	Parking		Spring applied, hydraulic released brake on transmission
Steering	Type		Full hydraulic, articulated
	Steering angle		40° to both right and left angle, respectively
	Relief pressure		210 kgf/cm ² (2990 psi)